

PP-12-SS
(handles not included)

NOTE: To convert standard faucet to stout style faucet, specify accessory model number BT-CFG and add \$270 List per faucet.

*NOTE: Pipe Pass-Thru Towers are manufactured to order and are not returnable.

PIPE PASS-THRU TOWERS WITH DRAIN PAN

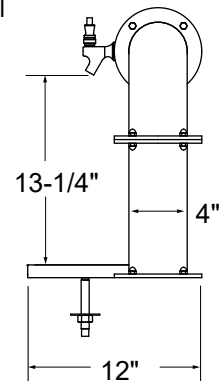
GRAINLINE FINISH		MIRROR FINISH		FAUCETS	WGT	WIDTH	SYSTEM TYPE
MODEL	LIST	MODEL	LIST				
PP-4-SS	\$7,340	PP-4-MF	\$8,271	4	44#	31-1/4"	Air Cooled
PP-4-SSR	\$7,257	PP-4-MFR	\$8,188	4	44#	31-1/4"	Glycol
PP-6-SS	\$8,197	PP-6-MF	\$9,159	6	49#	37-1/4"	Air Cooled
PP-6-SSR	\$8,088	PP-6-MFR	\$9,049	6	49#	37-1/4"	Glycol
PP-8-SS	\$9,071	PP-8-MF	\$10,063	8	54#	43-1/4"	Air Cooled
PP-8-SSR	\$8,933	PP-8-MFR	\$9,925	8	54#	43-1/4"	Glycol
PP-10-SS	\$10,090	PP-10-MF	\$11,115	10	61#	49-1/4"	Air Cooled
PP-10-SSR	\$9,929	PP-10-MFR	\$10,954	10	61#	49-1/4"	Glycol
PP-12-SS	\$10,949	PP-12-MF	\$12,005	12	67#	55-1/4"	Air Cooled
PP-12-SSR	\$10,763	PP-12-MFR	\$11,819	12	67#	55-1/4"	Glycol
PP-14-SS	\$11,849	PP-14-MF	\$12,930	14	73#	61-1/4"	Air Cooled
PP-14-SSR	\$11,629	PP-14-MFR	\$12,709	14	73#	61-1/4"	Glycol
PP-16-SS	\$12,743	PP-16-MF	\$13,852	16	78#	67-1/4"	Air Cooled
PP-16-SSR	\$12,499	PP-16-MFR	\$13,608	16	78#	67-1/4"	Glycol

PRODUCT INFORMATION

(see PP Spec Sheet for complete details)

STANDARD FEATURES

- All stainless steel construction
- Includes surface mount drain pan with lift-out perforated inserts
- 1/4" shanks with 3/16" restriction lines
- Available in grainline finish or mirror finish
- Air cooled for direct-draw system or glycol cooled for recirculating system
- Available in 4, 6, 8, 10, 12, 14, and 16 faucet sizes
- All models include all stainless steel faucets and shanks to resist corrosion and prevent metallic leaching, making them ideal for both draft beer and wine applications



Side Elevation

RINSER FAUCET EXTENSION

Pipe Pass-Thru Tower drain pans can be manufactured with rinsers faucet extensions to the left, right, or both sides of the drain pan. A rinsers faucet extension will add to the overall length of the drain pan. Add the appropriate RFE upcharge when placing your order.

NOTE: Rinsers faucets not intended for use with towers mounted to a refrigerator due to risk of water line freeze up.

Rinsers faucet installation notes:

- Unit does not provide a 1" air gap.
- Must be installed with external backflow prevention to meet applicable federal, state, and local plumbing code requirements.
- Install in-line water pressure regulator (included).
- A separate shut-off valve is recommended (not included).

MODEL	DESCRIPTION	LIST
RFE	Rinsers faucet extension	\$762

