



CP1RB72 with refrigeration hook up left, stainless doors and top

PRODUCT INFORMATION

(see CP1RB Spec Sheet for complete details)

STANDARD FEATURES:

- Remote unit
- All stainless steel interior construction
- Three adjustable coated shelves per section
- Listed to NSF Standard 7 for open food as a storage refrigerator

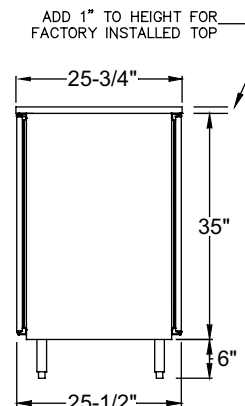
COOLERS - PASS-THRU, ONE ZONE, REMOTE, BAR PROFILE*

MODEL	LIST	LENGTH	DOOR		WEIGHT	BTU /HR	LONGNECK	750MLWINE
			DOORS	OPENING			CASES	BOTTLES**
CP1RB24*	\$6,735	24"	2	20"	225#	950	7.7	72
CP1RB40*	\$8,518	40"	4	16"	355#	1,600	13.1	114
CP1RB48*	\$8,785	48"	4	20"	365#	1,600	17.6	156
CP1RB60*	\$12,157	60"	6	16"	495#	2,000	21.6	194
CP1RB72*	\$12,532	72"	6	20"	510#	2,000	28.3	253

Base price only. See next page for configurable options.

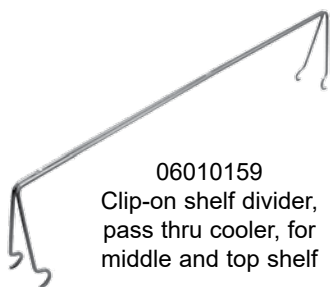
***NOTE:**

CP1RB coolers are manufactured to order and are not returnable.



Side Elevation

Bar Refrigeration



06010159
Clip-on shelf divider, pass thru cooler, for middle and top shelf

ACCESSORIES

MODEL	DESCRIPTION	LIST
CWS-16P	Wine rack shelf for 16" door opening, 5 bottles	\$196
CWS-20P	Wine rack shelf for 20" door opening, 7 bottles	\$223
06010159	Clip-on shelf divider for middle and top shelf	\$48
06006013	Clip-on shelf divider for bottom shelf only	\$48

ACCESSORY FOR REMOTE COOLER CABINET

MODEL	DESCRIPTION	LIST	WT
SVC	Solenoid valve and coil kit, for remote unit	\$316	6#
SVC-L	Solenoid valve and coil kit with factory installation, for remote unit	\$668	6#

*NOTE: CP1RB coolers are manufactured to order and are not returnable.

Select Configurable Options:

VOLTAGE		TOP STYLE					
120V/60HZ	No charge		24"	40"	48"	60"	72"
220V/50HZ (export voltage)	\$156	No finished top	No charge				
TEMPERATURE		Stainless top	\$495	\$629	\$694	\$793	\$894
Beer / Food, 34° to 40°, standard		LEFT SIDE FINISH					
White wine, 50° to 55°		Black vinyl-clad	No charge				
Red wine, 60° to 65°		Stainless Steel	\$48				
EXPANSION VALVE TYPE		RIGHT SIDE FINISH					
R448A or R449A	No charge	Black vinyl-clad	No charge				
R134a or R513A	No charge	Stainless Steel	\$48				
R404A or R452A	No charge	LED LIGHTING STYLE					
R407A or R407F	No charge	Bright white (7,000k), standard	No charge				
REFRIGERATION HOOK-UP LOCATION		Warm white (3,500k)	No charge				
Left	No charge	Amber (2,700k)	No charge				
Right	No charge	Blue	No charge				
DOOR OPTIONS		LEG AND STAINLESS STEEL KICK RAILS					
NOTE: Select options for EACH Door Section		NOTE: Legs are required if kick rails are ordered.					
STYLE AND FINISH - PER DOOR			24"	40"	48"	60"	72"
Door - Black vinyl-clad	No charge	6" legs	\$204	\$204	\$204	\$305	\$305
Door - Unlaminated	No charge	Front kick rail	\$127	\$145	\$158	\$173	\$190
Door - Stainless steel	\$48	Back kick rail	\$127	\$145	\$158	\$173	\$190
Door - Jeweled stainless	\$252	Left side kick rail	\$127	\$127	\$127	\$127	\$127
Door - Laminated	\$288	Right side kick rail	\$127	\$127	\$127	\$127	\$127
Door - Glass, black vinyl-clad	\$559						
Door - Glass, stainless steel	\$607						
Door - Glass, jeweled stainless	\$811						
Door - Glass, laminated	\$847						
DOOR HINGE LOCATION - PER DOOR							
Left	No charge						
Right	No charge						
DOOR HANDLE - PER DOOR							
Signature handle	No charge						
Pull-tab handle - stainless or black to match door; black for laminate	No charge						
Tube handle	No charge						



Signature handle



Pull-tab handle



Tube handle

Bar Refrigeration