



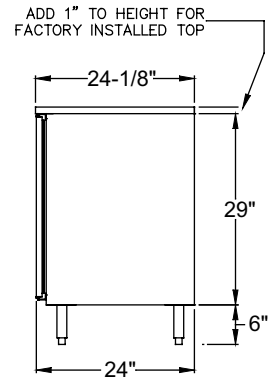
C1SL48
with compressor left,
stainless doors and top

PRODUCT INFORMATION

(see C1SL Spec Sheet for complete details)

STANDARD FEATURES:

- Self-contained
- All stainless steel interior construction
- Listed to NSF Standard 7 for open food as a storage refrigerator



Side Elevation

COOLERS - ONE ZONE, SIDE SERVICED, LOW PROFILE

| MODEL | LIST | LENGTH | DOOR | | WEIGHT | AMPS | HP | LONG NECK 750ML WINE | |
|--------|---------|--------|-------|---------|--------|------|-----|----------------------|-----------|
| | | | DOORS | OPENING | | | | CASES | BOTTLES** |
| C1SL20 | \$6,373 | 20" | 1 | 12" W | 165# | 2.75 | 1/8 | 2.8 | 28 |
| C1SL24 | \$6,179 | 24" | 1 | 17.5" W | 180# | 2.75 | 1/8 | 4.5 | 36 |
| C1SL28 | \$6,413 | 28" | 1 | 20" W | 195# | 2.75 | 1/8 | 5.1 | 42 |
| C1SL36 | \$8,363 | 36" | 2 | 12" W | 230# | 2.75 | 1/8 | 6.9 | 54 |
| C1SL44 | \$8,698 | 44" | 2 | 16" W | 255# | 2.75 | 1/8 | 8.9 | 72 |
| C1SL48 | \$8,867 | 48" | 2 | 18" W | 280# | 2.75 | 1/8 | 10.3 | 84 |

**Wine bottle capacity is based on adjustable shelves. Drawers are not intended for upright storage of wine bottles.

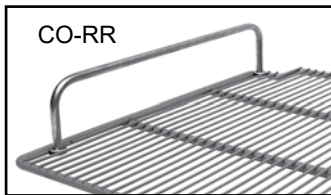
*NOTE: C1SL units are manufactured to order and are not returnable.

Base price only. See next page for configurable options.

ACCESSORIES

| MODEL | DESCRIPTION | LIST |
|----------|---|-------|
| CO-RR | Shelf retention rail | \$77 |
| CWS-12 | Wine rack shelf for 12" door opening, 3 bottle | \$156 |
| CWS-16 | Wine rack shelf for 16" door opening, 5 bottle | \$181 |
| CWS-17 | Wine rack shelf for 17.5" door opening, 5 bottle | \$194 |
| CWS-18 | Wine rack shelf for 18" door opening, 5 bottle | \$196 |
| CWS-20 | Wine rack shelf for 20" door opening, 7 bottle | \$205 |
| DICF-12L | Drawer insert, garnishes, full, 12" door opening, low-profile cooler, 6 cups | \$386 |
| DICP-12L | Drawer insert, garnishes, partial, 12" door opening, low-profile cooler, 4 cups | \$290 |
| DICF-16L | Drawer insert, garnishes, full, 16" door opening, low-profile cooler, 12 cups | \$568 |
| DICP-16L | Drawer insert, garnishes, partial, 16" door opening, low-profile cooler, 8 cups | \$412 |
| DICF-17L | Drawer insert, garnishes, full, 17.5" door opening, low-profile cooler, 12 cups | \$572 |
| DICP-17L | Drawer insert, garnishes, partial, 17.5" door opening, low-profile cooler, 8 cups | \$414 |
| DICF-18L | Drawer insert, garnishes, full, 18" door opening, low-profile cooler, 12 cups | \$578 |
| DICP-18L | Drawer insert, garnishes, partial, 18" door opening, low-profile cooler, 8 cups | \$417 |
| DICF-20L | Drawer insert, garnishes, full, 20" door opening, low-profile cooler, 15 cups | \$668 |
| DICP-20L | Drawer insert, garnishes, partial, 20" door opening, low-profile cooler, 10 cups | \$477 |
| DIP-17 | Drawer insert for fractional stainless pans, 17.5" door opening (pans not included) | \$258 |
| DIP-18 | Drawer insert for fractional stainless pans, 18" door opening (pans not included) | \$264 |
| DIP-20 | Drawer insert for fractional stainless pans, 20" door opening (pans not included) | \$287 |
| 06010158 | Clip-on shelf divider | \$48 |

Bar Refrigeration

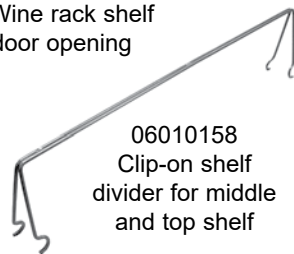


CO-RR

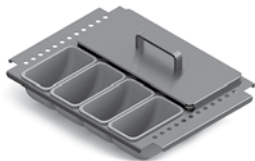
The CO-RR shelf retention rail should be used on all shelves adjacent to kegs. (CO-RR shown installed on shelf)



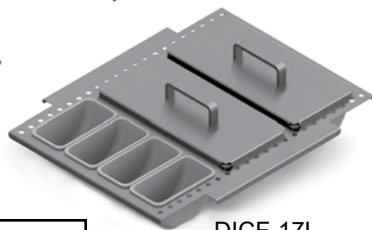
CWS-20 Wine rack shelf for 20" door opening



06010158
Clip-on shelf divider for middle and top shelf



DICP-17L



DICF-17L
Front covers removed for illustrative purposes



DIP-18
Pans not included

Select Configurable Options:

VOLTAGE

| | |
|----------------------------|-----------|
| 120V/60HZ | No charge |
| 220V/50HZ (export voltage) | \$307 |

TEMPERATURE

| | |
|-----------------------------------|-----------|
| Beer / Food, 34° to 40°, standard | No charge |
| White wine, 50° to 55° | No charge |
| Red wine, 60° to 65° | No charge |

REFRIGERATION COMPARTMENT LOCATION

| | |
|-------|-----------|
| Left | No charge |
| Right | No charge |

REFRIGERATION COMPARTMENT COVER FINISH

| | |
|-------------------------|-----------|
| Black vinyl-clad | No charge |
| Stainless steel | \$39 |
| Jeweled stainless steel | \$232 |

DOOR/DRAWER OPTIONS

NOTE: Select options for EACH Door/Drawer Section

STYLE AND FINISH - PER SECTION

| | |
|---------------------------------|-----------|
| Door - Black vinyl-clad | No charge |
| Door - Unlaminated | No charge |
| Door - Stainless steel | \$48 |
| Door - Jeweled stainless | \$252 |
| Door - Laminated | \$288 |
| Door - Glass, black vinyl-clad | \$559 |
| Door - Glass, stainless steel | \$607 |
| Door - Glass, jeweled stainless | \$811 |
| Door - Glass, laminated | \$847 |
| Drawers - Black vinyl-clad | \$2,314 |
| Drawers - Unlaminated | \$2,314 |
| Drawers - Stainless steel | \$2,362 |
| Drawers - Jeweled stainless | \$2,566 |
| Drawers - Laminated | \$2,602 |

DOOR HINGE LOCATION - PER DOOR

| | |
|-------|-----------|
| Left | No charge |
| Right | No charge |

SHELVING - PER DOOR

| | |
|-------------------------------------|-----------|
| Two adjustable shelves | No charge |
| Pull-out wine shelves: | |
| • w/upright and horizontal storage* | \$2,101 |
| • w/horizontal storage* | \$2,802 |

*Note: Not available for 12" door opening models

DOOR HANDLE - PER DOOR/DRAWER

| | |
|--|-----------|
| Signature handle (doors only) | No charge |
| Pull-tab handle - stainless or black to match door; black for laminate | No charge |
| Tube handle | No charge |

*NOTE: C1SL units are manufactured to order and are not returnable.



Optional pull-out wine shelves Horizontal (left) and upright (right) storage shown



TOP STYLE

| | 20" | 24" | 28" | 36" | 44" | 48" |
|-----------------|-------|-------|-------|-----------|-------|---------|
| No finished top | | | | No charge | | |
| Stainless top | \$412 | \$440 | \$465 | \$519 | \$575 | \$601 |
| Drainboard top | \$677 | \$725 | \$772 | \$869 | \$962 | \$1,011 |

4" HIGH STAINLESS SPLASHES

| | 20" | 24" | 28" | 36" | 44" | 48" |
|--|-------|-------|-------|-------|-------|-------|
| NOTE: Can only be ordered with stainless steel top | | | | | | |
| Backsplash | \$156 | \$161 | \$170 | \$186 | \$200 | \$206 |
| Left side splash | \$161 | \$161 | \$161 | \$161 | \$161 | \$161 |
| Right side splash | \$161 | \$161 | \$161 | \$161 | \$161 | \$161 |

LEFT SIDE FINISH

| | |
|------------------|-----------|
| Black vinyl-clad | No charge |
| Stainless Steel | \$48 |

RIGHT SIDE FINISH

| | |
|------------------|-----------|
| Black vinyl-clad | No charge |
| Stainless Steel | \$48 |

BACK FINISH

| | 20" | 24" | 28" | 36" | 44" | 48" |
|------------------|-------|-------|-------|-----------|-------|-------|
| Galvanized steel | | | | No charge | | |
| Stainless steel* | \$351 | \$365 | \$377 | \$404 | \$431 | \$446 |

*NOTE: Stainless steel back option also includes stainless steel sides.

LED LIGHTING STYLE

| | |
|---------------------------------|-----------|
| Bright white (7,000k), standard | No charge |
| Warm white (3,500k) | No charge |
| Amber (2,700k) | No charge |
| Blue | No charge |

LEG AND STAINLESS STEEL KICK RAILS

NOTE: Legs are required if kick rails are ordered.

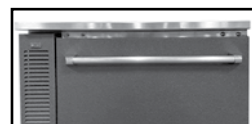
| | 20" | 24" | 28" | 36" | 44" | 48" |
|----------------------|-------|-------|-------|-------|-------|-------|
| 6" legs | \$204 | \$204 | \$204 | \$204 | \$204 | \$204 |
| Front kick rail | \$123 | \$127 | \$133 | \$142 | \$153 | \$158 |
| Left side kick rail | \$127 | \$127 | \$127 | \$127 | \$127 | \$127 |
| Right side kick rail | \$127 | \$127 | \$127 | \$127 | \$127 | \$127 |

CASTERS

| | 20" | 24" | 28" | 36" | 44" | 48" |
|----------------|-------|-------|-------|-------|-------|-------|
| 4-1/8" casters | \$182 | \$182 | \$182 | \$182 | \$182 | \$182 |
| 2-7/8" casters | \$176 | \$176 | \$176 | \$176 | \$176 | \$176 |
| 1-1/2" casters | \$310 | \$310 | \$310 | \$310 | \$310 | \$310 |



Drawer pull-tab handle



Drawer tube handle



Tube handle



Optional drawers include adjustable divider walls



Signature handle



Pull-tab handle

Bar Refrigeration