

All faucets are certified low lead compliant

Bar Fabrication - Signature



BSB-18



DBSB-18



BSA-18-RF



DBSA-12-RF

Rinser faucet installation notes:

- Important: Unit must be installed in conformance with applicable federal, state, and local plumbing codes, including adequate backflow when required.
- Must install backflow prevention device conforming to ANSI/ASSE 1022 or ANSI/ASSE 1024 to meet plumbing code (not included).
- Install in-line water regulator (included).
- A separate shut-off valve is recommended (not included).

Blender stations cannot have a speed rail mounted to them. Since speed rails are so common on underbar, blender stations come in 24" and 29" depths and are designed to align with underbar that has a speed rail.

⚠️WARNING: The plastic wet waste strainer included with this product can expose you to chemicals including Bisphenol A (BPA), which is known to the State of California to cause birth defects or other reproductive harm. For more information, go to www.P65Warnings.ca.gov. **Part #03000483**
Warning applies to State of California only.

Blender Stations come standard with a sink, faucet, and wet waste strainer. Drainboard Blender Stations come standard with a drainboard work surface consisting of a drain pan with separate removable perforated insert. The integral blender shelf is 9" deep on the 24" deep models and 10" deep on 29" models. The shelf stores the blender at the 19" high level. A grommeted cord access hole is provided in the front skirt.

24" DEEP BLENDER STATIONS

(Aligns with 19" deep underbar that has a single speed rail)

MODEL	LIST	LENGTH	WEIGHT
BSA-12	\$2,443	12"	48#
BSA-14	\$2,416	14"	50#
BSA-18L †*	\$2,514	18"	55#
BSA-18R †*	\$2,514	18"	55#

† Denotes faucet location as Left or Right

24" DEEP BLENDER STATION WITH RINSER FAUCET

(Aligns with 19" deep underbar that has a single speed rail)

MODEL	LIST	LENGTH	WEIGHT
BSA-18-RF*	\$3,191	18"	60#

29" DEEP BLENDER STATIONS

(Aligns with 24" deep underbar that has a single speed rail or 19" deep underbar that has a double speed rail)

MODEL	LIST	LENGTH	WEIGHT
BSB-12*	\$2,609	12"	53#
BSB-14*	\$2,688	14"	55#
BSB-18*	\$2,829	18"	60#

24" DEEP DRAINBOARD BLENDER STATIONS

(Aligns with 19" deep underbar that has a single speed rail)

MODEL	LIST	LENGTH	WEIGHT
DBSA-12*	\$1,610	12"	40#
DBSA-14*	\$1,650	14"	42#
DBSA-18*	\$1,690	18"	45#
DBSA-24*	\$1,838	24"	55#

24" DEEP DRAINBOARD BLENDER STATIONS WITH RINSER FAUCET

(Aligns with 19" deep underbar that has a single speed rail)

MODEL	LIST	LENGTH	WEIGHT
DBSA-12-RF*	\$2,124	12"	45#
DBSA-14-RF*	\$2,178	14"	47#
DBSA-18-RF*	\$2,273	18"	50#

29" DEEP DRAINBOARD BLENDER STATIONS

(Aligns with 24" deep underbar that has a single speed rail or 19" deep underbar that has a double speed rail)

MODEL	LIST	LENGTH	WEIGHT
DBSB-12*	\$1,626	12"	45#
DBSB-14*	\$1,667	14"	47#
DBSB-18*	\$1,769	18"	50#

*NOTE: These items are manufactured to order and are not returnable

PRODUCT INFORMATION

(see BS and DBS Spec Sheets for complete details)

STANDARD FEATURES

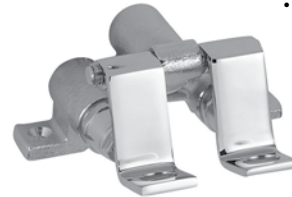
- All stainless steel construction
- Adjustable stainless steel bullet feet
- Sink models feature a 9-1/4" by 11-1/2" by 6" deep sink bowl, a lift-out plastic perforated sink strainer and a hot and cold water faucet
- Drainboard models feature drainboard work surface consisting of drain pan with separate removable perforated insert
- "-RF" models include a rinsing faucet for rinsing blender cups
- 24" deep models have a 9" deep shelf
- 29" deep models have a 10" deep shelf
- Junction box for duplex outlet mounted underneath blender shelf (outlet not included)

Optional foot-operated faucets



- FOF-B**
- BSA-12
 - BSA-18-RF
 - BSB-12

- FOF-D**
- BSA-14
 - BSA-18-L
 - BSA-18-R
 - BSB-14
 - BSB-18



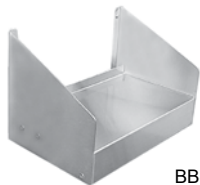
TR

CONFIGURABLE OPTIONS

<u>MODEL</u>	<u>DESCRIPTION</u>	<u>LIST</u>	<u>WT</u>
LS15-F	15" D left side splash (BSA models)	\$189	4#
RS15-F	15" D right side splash (BSA models)	\$189	4#
LS15-D	15" D left side splash (DBSA models)	\$189	4#
RS15-D	15" D right side splash (DBSA models)	\$189	4#
LSA-D	19" deep left side splash (BSB & DBSB models)	\$189	4#
RSA-D	19" deep right side splash (BSB & DBSB models)	\$189	4#
LSRF	Left side splash (-RF models)	\$189	4#
RSRF	Right side splash (-RF models)	\$189	4#
FOF-B	Convert to foot-operated backsplash faucet for BSA-12, BSA-18-RF, and BSB-12 models	\$697	3#
FOF-D	Convert to foot-operated deck faucet for BSA-14, BSA-18L, BSA-18R, BSB-14, and BSB-18 models	\$532	3#

ACCESSORY

<u>MODEL</u>	<u>DESCRIPTION</u>	<u>LIST</u>	<u>WT</u>
TR	Towel ring	\$25	1#



BBS-12

Additional blender shelf space can be added to standard underbar units by specifying a Bolt-on Blender Shelf. Bolt-on Blender Shelves are 10" deep and include a junction box for duplex outlet (outlet not included) mounted below the shelf.

BOLT-ON BLENDER SHELVES

<u>MODEL</u>	<u>DESCRIPTION</u>	<u>LIST</u>	<u>WT</u>
BBS-8	8" bolt-on blender shelf	\$361	8#
BBS-12	12" bolt-on blender shelf	\$379	12#
BBS-14	14" bolt-on blender shelf	\$387	14#
BBS-16	16" bolt-on blender shelf	\$402	16#
BBS-18	18" bolt-on blender shelf	\$412	18#
BBS-24	24" bolt-on blender shelf	\$446	28#
BBS-30	30" bolt-on blender shelf	\$474	36#

Bar Fabrication - Signature