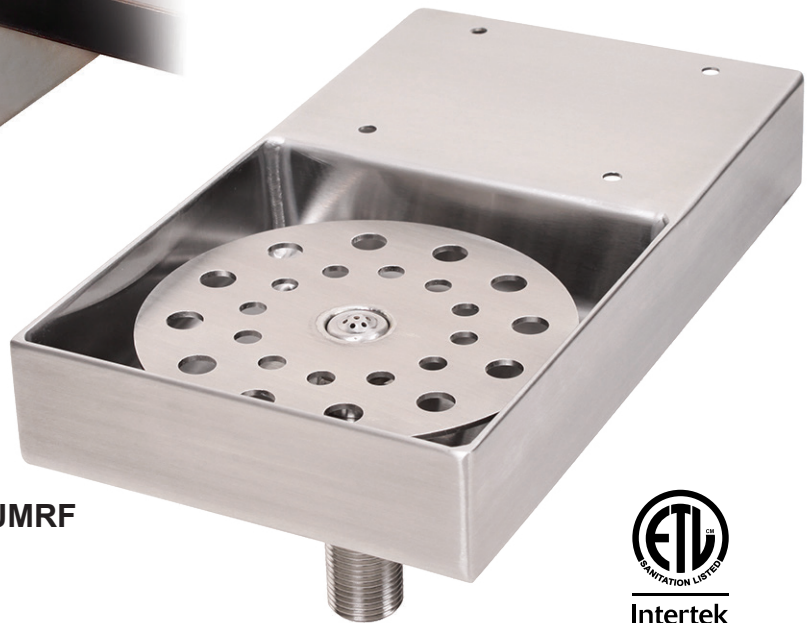




# Rinse with confidence



Glastender's proprietary rinser faucet conforms to low-lead standards, so you can rinse away knowing your faucet meets the most stringent health department requirements.



UMRF

**Glastender.**  
Leading. Not imitating.



**Intertek**  
4004503  
Conforms to  
NSF/ANSI STD 372

Expect more

*more flexibility*

more features