

A FAMILY COMPANY MANUFACTURING IN THE USA SINCE 1969

MODULAR BAR DIE



Glastender®

Benefits:

- Arrives pre-assembled from the factory in sections up to 10 feet long for easy installation—lowers installation costs. Just bolt the sections together, level, and attach to the floor.
- Eliminates all underbar legs for easy cleaning.
- Stainless steel from floor to bar top and sealed to the floor on the bartender side to prevent moisture from absorbing into the bar die wall or leaking to the customer side of the bar.
- Incredibly strong 16 gauge galvanized steel structure easily withstands 1,000 pounds per foot of downward force.
- Built-in chaseways hide beer, soda, plumbing, and electrical lines for a more attractive and easier to clean bar.
- Fluorescent lights and GFI outlets for electrical equipment built into bar die wall to reduce installation time (wiring not included).
- Pre-engineered to exact dimensions to ensure all bar equipment fits properly.
- Millwork bar top and front panels can be pre-fabricated and easily attached to shorten installation time.

Expect more *more flexibility*
more features

GLASSWASHERS • COCKTAIL STATIONS • COOLERS • FROSTERS • BEER SYSTEMS

MODULAR BAR DIE INSTALLATION INFORMATION

With the Glastender Modular Bar Die, all the underbar equipment is pre-assembled and mounted to the bar die at the factory, then broken down into shippable sections. Installation of the bar die is very simple – easier than a conventional style underbar line up with millwork bar die. The result is a beautiful and easy to clean underbar line up that is sealed to the floor, stainless from floor to bar top, eliminates all underbar leg sets, and hides the soda, beer, electrical, and plumbing lines.

Step One ▶

Uncrate the various sections. Notice that all of the underbar equipment comes pre-assembled to the bar die. With Modular Bar Die, much of the installation time associated with standard bar jobs is done at the factory.



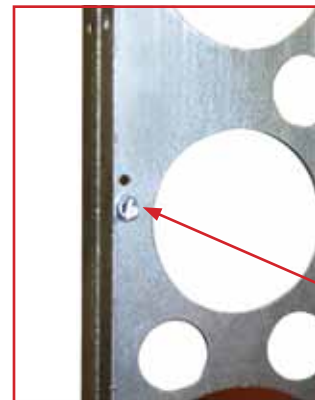
Step Two ◀

After uncrating, move the sections to their proper locations. The sections are placed over soda and beer line conduits, plumbing and electrical rough-ins, which the customer has located properly by referencing the factory supplied modular bar die foot print drawing.



Step Three ▶

Sections should be loosely fastened together through the holes in the vertical studs using the #14 sheet metal screws provided. Use one screw per hole set for a total of 8 screws per stud connection. Do not tighten the screws down completely. Clips and bolts are also provided to secure adjoining underbar pieces.



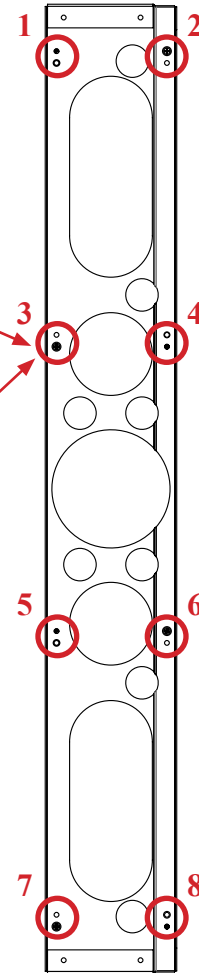
Two holes residing close together = hole set

Step Four ▼

The bar die must be leveled while the screws in the vertical studs are still loose. This may require the use of small composite or steel shims that are supplied by the installing contractor. Small gaps created by leveling can be hidden when the finish flooring is installed.



Once the bar die has been leveled, all screws must be securely tightened. Seal all joints between the different sections using an NSF listed sealant.



Step Six ▲

Mount the bar die to the floor using the holes in the bottom plate. The anchoring method used can be chosen by the installing contractor. See Anchoring Guidelines below.



Step Seven ◀

Plumbing, electrical†, soda, and beer installers can complete their installations with free access to the back of the equipment on the customer side of the bar die. The multiple chase-ways provided in the vertical studs of the bar die give ample room for all utilities. The contractors can finish their install work before the bar top and front finishing panels are mounted, eliminating the risk of damage to the finished bar.

†Single-plex outlets must be wired to GFI protected circuits.

Step Eight ▶

Install flooring on bartender side of the bar die. The bartender side has a 6" permanently mounted bottom panel so flooring (such as tile) can be installed against the Bar Die to create a water tight seal. All removable panels on the bartender side are higher than 6". The type of flooring selected will not interfere with equipment access.

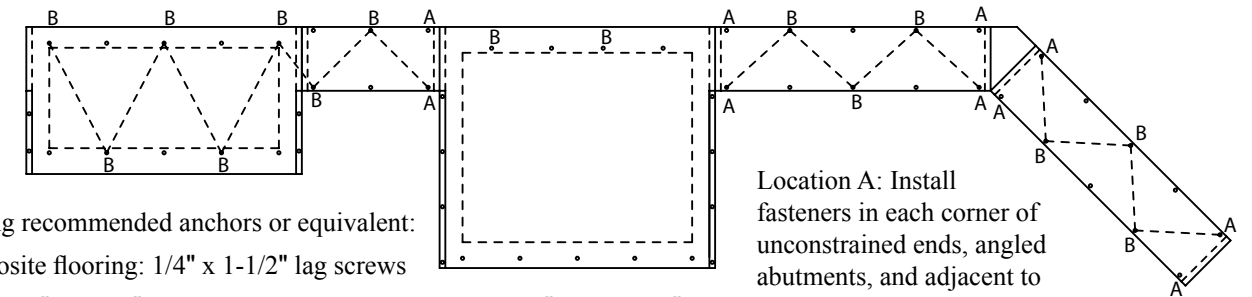


Anchoring Guidelines ▼

Use the following recommended anchors or equivalent:

- Wood or composite flooring: 1/4" x 1-1/2" lag screws
- Concrete floor: 1/4" x 1-1/4" Tapcon thread cutting anchor OR 1/4"-20 x 1-3/4" Trubolt wedge anchor

NOTE: All fasteners must be installed per manufacturer requirements and must be flush to mounting surface to ensure tight clamping to floor surface



Location A: Install fasteners in each corner of unconstrained ends, angled abutments, and adjacent to cabinet bases.

Location B: Install fasteners in a zigzag every-other-hole pattern as shown.

Customer Side Finish By Millwork Trades

(Recommended Procedure)

It is recommended that the panels used to finish the bar die be made of 3/4" plywood laminated on all six sides. The finish flooring for the customer side of the bar can be installed before or after the finish millwork has been applied. The decision is based on the type of flooring involved and the style of front finishing being used.



Step One ◀

Mount the permanent toe plate to the bottom of the bar die, securing to the vertical studs. If it is secured through the inside of the bar die, the screw holes in the toe plate will not have to be filled. A top trim piece or cleat with the same thickness as the toe plate must be mounted to the bar die to create the offset necessary to mount the front panel correctly. Foot rails can also be installed at this time.

Step Two ▶

Set the bar top in place. Once all sections of the bar top have been aligned, secure it to the bar die from below the bar top and through the horizontal bar die studs.



Step Three ◀

Mount the front panels. The front panels should be removable and sized for easy handling. Z-clips to accommodate the thickness of the toe plate will be sent from the factory upon request (7/8" is the most common size). Install z-clips to the bottom of the front panel to clip to toe plate. The top of the front panel should be screwed to the bar die through the trim piece and into the vertical or horizontal studs.



Permanent front panels can be installed if easy access to the equipment and utilities from the customer side is not required.

Specifications

There are three types of Modular Bar die: flat wall, pedestal base, and cabinet base. Rough-in space varies with the type of base selected. Flat wall sections occur where there is no equipment or where the equipment is removable (glasswashers, coolers, mug frosters, etc.) Pedestal bases are the most common since they are used for standard underbar equipment that is normally on 16" legs. Cabinet style underbar equipment, typically on 6" legs, will receive a cabinet style base.

NOTE: Individual sections are shown for illustrative purposes. Actual orders are shipped pre-assembled in sections up to 10 feet long.



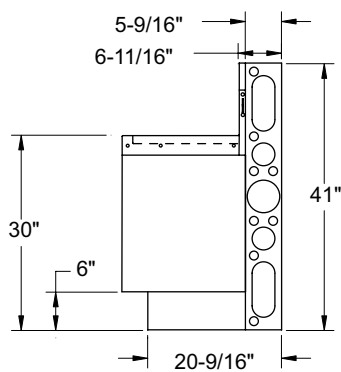
Cabinet



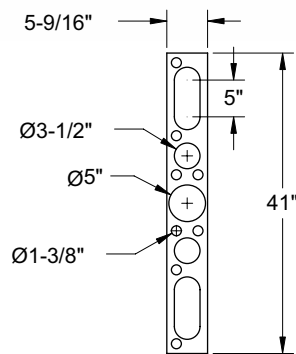
Pedestal



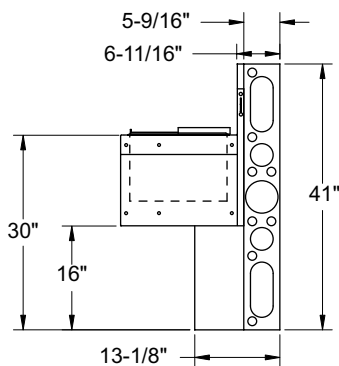
Flat Wall



Cabinet Base End View



Flat Wall End View



Pedestal Base End View

Modular Bar Die orders include an installation "foot print" which shows the dimensions of the bar die as it touches the floor. The foot print drawing can be used as a reference in the field for placement of soda, beer, plumbing, and electrical rough-ins prior to delivery of the equipment. Finish flooring (tile, carpet, etc.) should not be completed until after the Modular Bar Die has been installed.



Flat Wall



Pedestal

Cabinet

Optimum location to stub up beer, soda, plumbing, and electrical lines.

Secure to floor using the 1/4" holes in bottom plate.