

|                          |            |
|--------------------------|------------|
| Project: _____           | AIA# _____ |
| Item #: _____ Qty: _____ | SIS# _____ |
| Model #: _____           |            |

## Wall Cabinets



WCH48

### Standard Features

- Includes intermediate shelf
- Includes wall mounting bracket
- Available with open front or with hinged doors
- Door models include door locks and positive latch catch
- Door models 24" - 48" = 2 doors, 60" - 96" = 4 doors
- Sloping top to create sanitary surface

### Materials

- All 18 gauge stainless steel construction
- Stainless steel hinges and handles



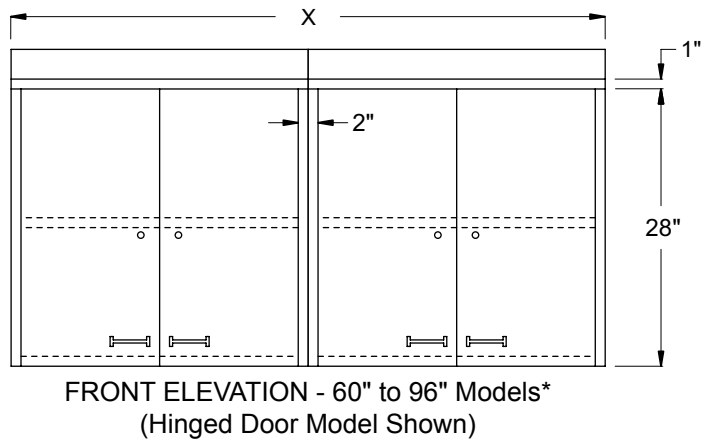
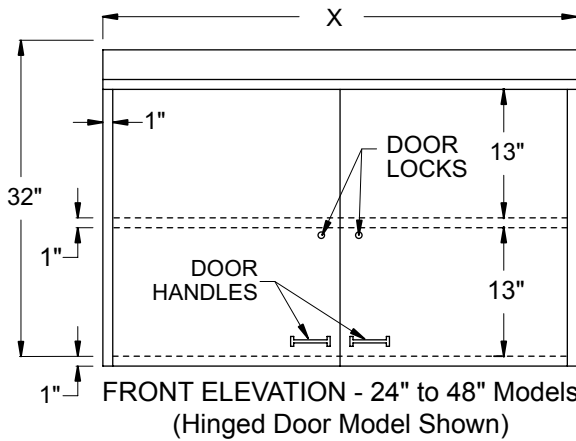
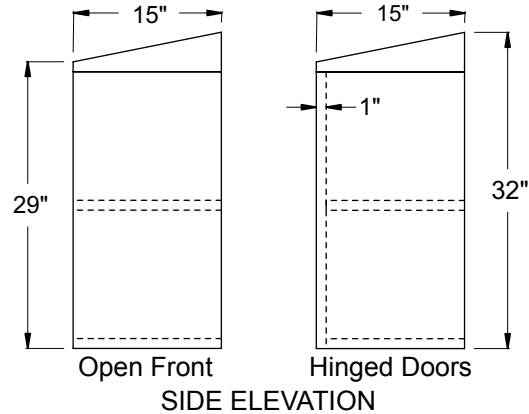
**Intertek**  
4004503

Conforms to NSF/ANSI STD 2

To view cleaning and care instructions, please visit: [http://www.glastender.com/PDF/F-423-011\\_ss\\_clean\\_care.pdf](http://www.glastender.com/PDF/F-423-011_ss_clean_care.pdf)

### Dimensional Information

| X   | Open Front | Hinged Doors |
|-----|------------|--------------|
| 24" | WCO24      | WCH24        |
| 30" | WCO30      | WCH30        |
| 36" | WCO36      | WCH36        |
| 42" | WCO42      | WCH42        |
| 48" | WCO48      | WCH48        |
| 60" | WCO60      | WCH60        |
| 72" | WCO72      | WCH72        |
| 96" | WCO96      | WCH96        |



\*NOTE: Four door models ship as two units and include hardware for field assembly.

|   |                 |
|---|-----------------|
| <b>Glastender, Inc.</b> • 5400 North Michigan Road • Saginaw, MI • 48604-9780<br>989.752.4275 • 800.748.0423 • Fax 989.752.4444<br><a href="http://www.glastender.com">www.glastender.com</a> | Approval/Notes: |
| Specifications subject to change without notice. For current specifications please visit our website.   |                 |