

Project: _____	AIA# _____
Item #: _____ Qty: _____	SIS# _____
Model #: _____	

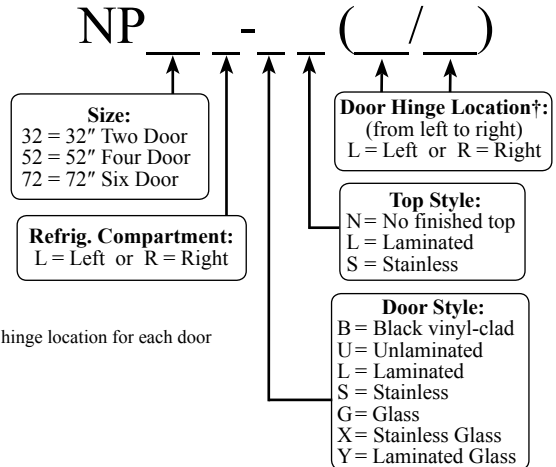
## Narrow Door Pass Thru Coolers - Two, Four, and Six Door Self-Contained



NP52L-BL(LR/LR)



**Intertek** 4004503 **Intertek**  
 Conforms to NSF/ANSI STD 7 and UL STD 471  
 Certified to CSA STD C22.2 No. 120  
 Meets NSF 7 requirements for open food storage



### Standard Features

- DOE 2017 compliant
- All stainless steel interior with radius corners is easy to keep clean
- Locking doors
- LED interior lighting
- Heated mullion to minimize condensation
- Evaporator above compressor compartment to maximize storage capacity
- Available without a finished top for integrated installation below customer supplied bar top
- Easy to remove condenser filter can be regularly cleaned to maintain condenser coil efficiency
- 180° swinging doors

### Specifications

#### Electrical

- 120V, 1 phase, 60 Hz
- Full load amps - NP32 - 3.0, NP52 and NP72 - 5.7
- Dedicated 15 amp circuit is required
- Includes a 6 foot NEMA 5-15P grounded cord and plug which exits the back of refrigeration compartment



#### Refrigeration

- R134a refrigerant
- Compressor - NP32 -1/8 HP, NP52 and NP72 -1/4 HP
- Heat rejection - NP32 - 1228 BTU/Hr, NP52 and NP72 - 2334 BTU/Hr

#### Operating Range

- 34°F (1°C) to 40°F (4°C)

#### Plumbing

- Automatic condensate evaporator. No drain connection required.

#### Shelving

- Two adjustable coated shelves and one bottom coated rack per door included

#### Materials

- Stainless steel parts include: interior, front of cabinet, hinges, hinge and lock brackets, and optional legs
- Black vinyl-clad steel parts include: standard sides, doors, and compressor cover
- Galvanized steel parts include: exterior sub-top, back and bottom
- Zinc plated CR steel parts include: leg sockets

#### Weight Bearing Capacity

- Counter tops and other accessories should not exceed 200 pounds per door

Capacities	NP32	NP52	NP72
• 12 oz. bottles, cases	6.6	14.6	23.1
• 750ml wine bottles	67	129	209

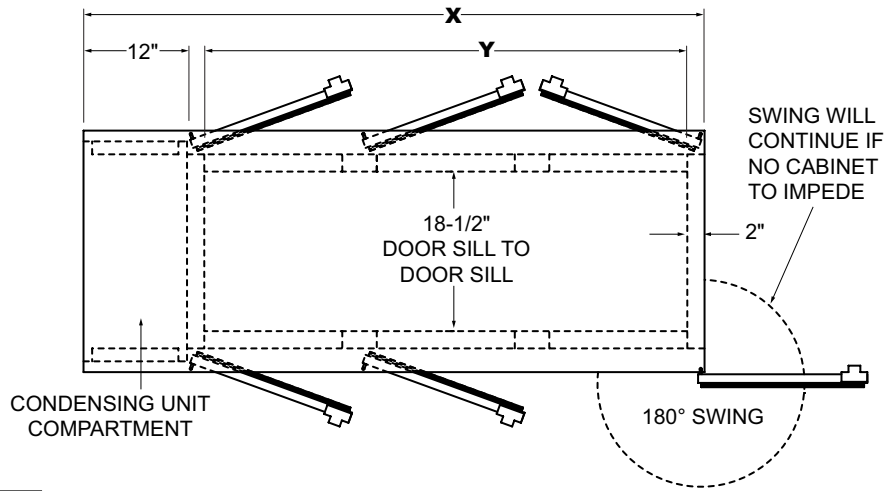
<b>Glastender, Inc.</b> • 5400 N Michigan Rd • Saginaw, MI • 48604-9780 989.752.4275 • 800.748.0423 • Fax 989.752.4444 www.glastender.com	Approval/Notes:
---	-----------------

Specifications subject to change without notice. For current specifications please visit our website.

# Self-Contained Narrow Door Pass Thru Coolers

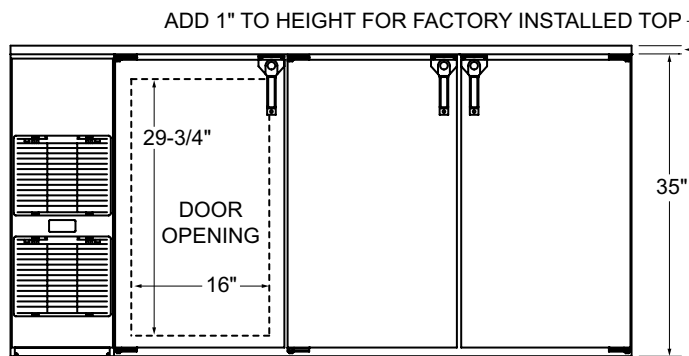
## Dimensional Information

### PLAN VIEW



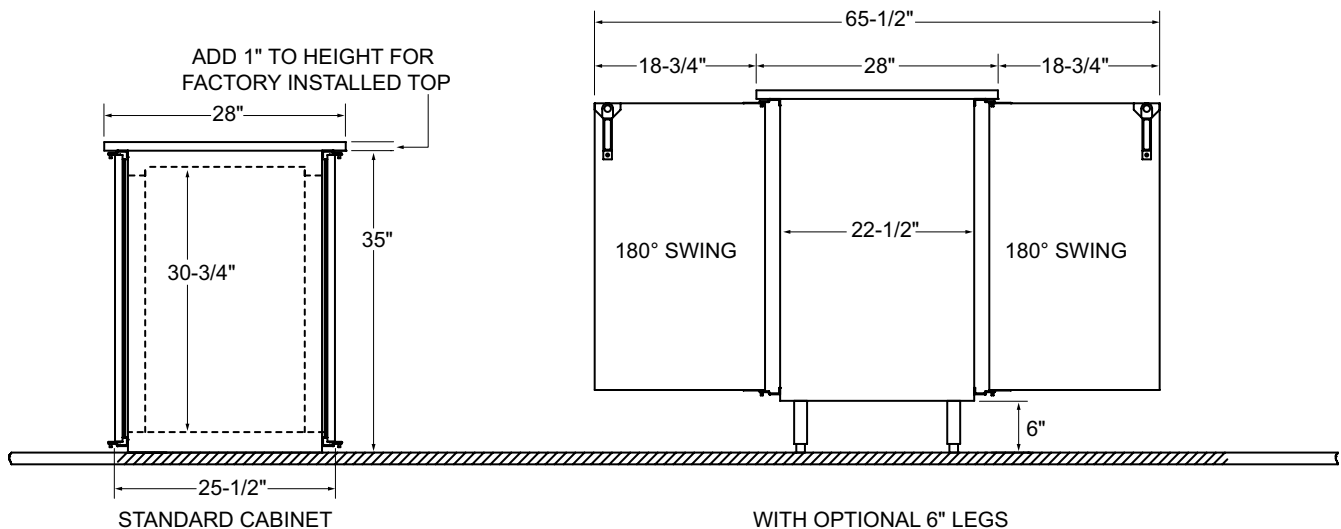
Model	X	Y	DOORS
NP32	32"	16"	2
NP52	52"	36"	4
NP72	72"	56"	6

### FRONT VIEW



Note: Available with compressor left or right. Compressor left model shown. Use Model Number Key to specify location when ordering.

### SIDE VIEWS



5400 N Michigan Rd • Saginaw, MI • 48604-9780  
 989.752.4275 • 800.748.0423 • Fax 989.752.4444  
 www.glastender.com