

Project: _____	AIA# _____
Item #: _____ Qty: _____	SIS# _____
Model #: _____	

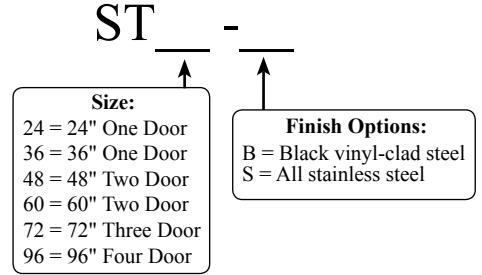
## Slide Top Coolers



ST48-S



4004503  
 Conforms to NSF/ANSI STD 7 and UL STD 471  
 Certified to CSA STD C22.2 No. 120  
 Meets NSF 7 requirements for closed container products



### Standard Features

- Self-contained refrigeration
- All stainless steel interior with radius corners is easy to keep clean
- One-piece integral top and mullion design
- Easy to plan exterior dimensions: 24" front to back and 24", 36", 48", 60", 72", or 96" left to right
- Exterior options available in black vinyl-clad steel front and sides with galvanized steel back, stainless steel front and sides, or all stainless steel
- Automatic defrost cycle
- Automatic condensate evaporator - no drain connection required
- Six foot grounded cord & plug included (exits left rear)
- Optional 3-3/4" casters or 6" legs are available
- Door lock(s)

### Specifications

- Electrical**
- 120V, 1 phase, 60 Hz
  - ST24, ST36, ST48, ST60 - 3.0 full load amps
  - ST72, ST96 - 4.0 full load amps
  - Dedicated 15 amp circuit is recommended
  - Includes a 6-foot NEMA 5-15P grounded cord & plug which exits the left rear of the refrigeration compartment
- Refrigeration**
- ST24, ST36, ST48, ST60 - 1/8 HP
  - ST72, ST96 - 1/4 HP
  - R134a refrigerant
  - BTU/hr heat rejection:  
 ST24, ST36, ST48, ST60 - 1,228 BTU/hr  
 ST72, ST96 - 1,640 BTU/hr
  - Operating range: 34°F (1°C) to 40°F (4°C)
  - Fin & tube evaporator with forced air circulation



- Legs**
- Optional 6" legs, specify accessory #STLS-4 (ST24, ST36, ST48, ST60) or #STLS-6 (ST72, ST96)
  - 1-5/8" diameter
  - Stainless steel bullet feet
- Materials**
- Stainless steel parts include: top, door, interior and optional legs. Also, front and sides and back on '-S' models
  - Black vinyl-clad steel parts include: front and sides on '-B' models
  - Galvanized steel parts include: base on all models and exterior back on '-B' models

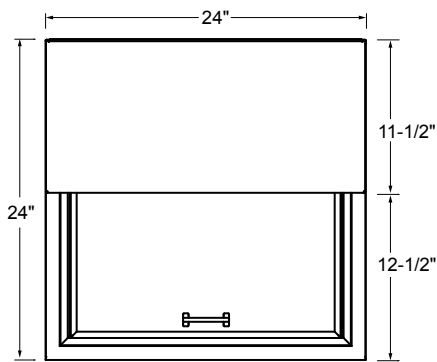
- Plumbing**
- Automatic condensate evaporator. No drain connection required

- Partitions**
- ST36 includes two vertical wire partitions
  - ST48 includes three vertical wire partitions
  - ST60 and ST72 include four vertical wire partitions
  - ST96 includes five vertical wire partitions

<p><b>Glastender, Inc.</b> • 5400 N Michigan Rd • Saginaw, MI • 48604-9780                  989.752.4275 • 800.748.0423 • Fax 989.752.4444  <a href="http://www.glastender.com">www.glastender.com</a></p>	<p>Approval/Notes:</p>
--	------------------------

# Slide Top Coolers

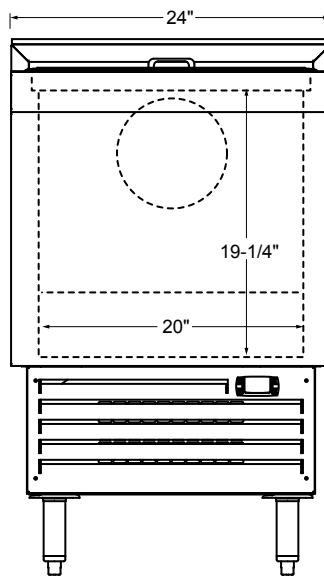
## Dimensional Information



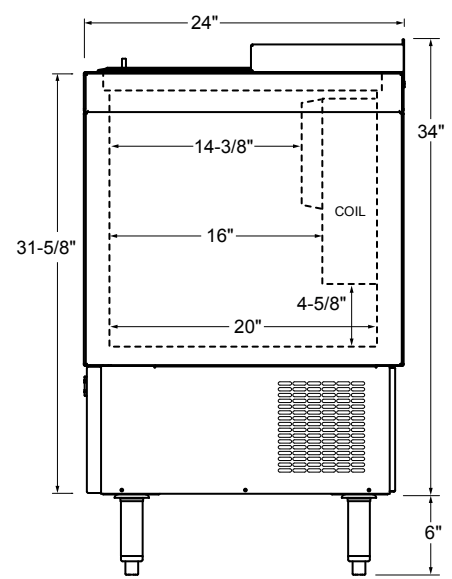
PLAN VIEW

ST24\*

\*ALL MODELS SHOWN WITH OPTIONAL 6" LEGS



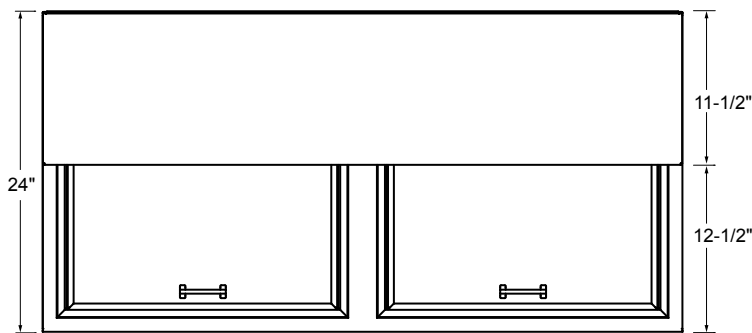
FRONT ELEVATION



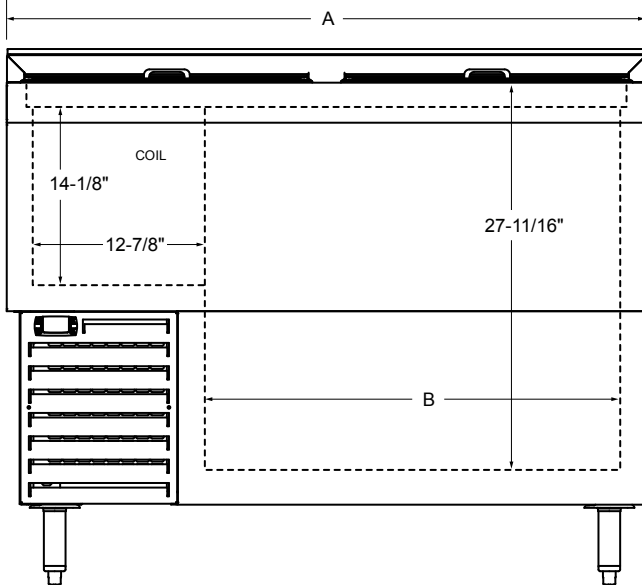
SIDE ELEVATION

PLAN VIEW

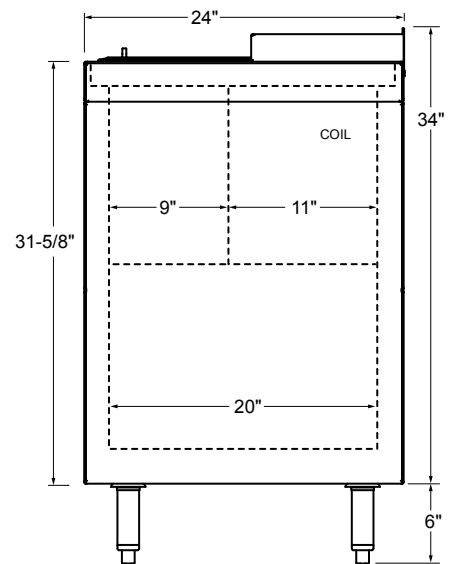
ST36\*, ST48\*, ST60\*, ST72\*, ST96\*



Model	A	B	No. of Doors
ST36	36"	19-1/8"	1 Large
ST48	48"	31-1/8"	2 Standard
ST60	60"	43-1/8"	1 Large, 1 Standard
ST72	72"	55-1/8"	3 Standard
ST96	96"	79-1/8"	4 Standard



FRONT ELEVATION



SIDE ELEVATION



5400 N Michigan Rd • Saginaw, MI • 48604-9780  
 989.752.4275 • 800.748.0423 • Fax 989.752.4444  
[www.glastender.com](http://www.glastender.com)