

Project: _____	AIA# _____
Item #: _____ Qty: _____	SIS# _____
Model #: _____	

Ice Display Units



IDU-12x24



Intertek
4004503

Conforms to NSF/ANSI STD 2

IDU-12X*, IDU-18X*, IDU-24X*

* Reflects length of unit in inches from the following options:
24, 30, 36, 42, 48, 54, 60, 66, 72, 78, 84, 90, 96, 102, or 108

Standard Features

- All stainless steel construction
- PVC “Breaker Strip” around ice bins acts as thermal barrier to prevent heat transfer
- Foamed-in-place insulation
- 1/2” tall perforated stainless steel bottom inserts
- Available as factory installed on top of a cooler cabinet or as field installed on a countertop
- 6-1/2” high with 5-1/2” deep liner

NOTE: Ice display units merchandise bottled beverages and may be factory mounted to the top of Glastender Back Bar, Narrow Door, Low Profile, Pass Thru, and Front Venting Coolers and Dry Storage Cabinets. Ice display unit may also be field installed to an existing countertop.

To view cleaning and care instructions, please visit: http://www.glastender.com/PDF/F-423-011_ss_clean_care.pdf

Specifications

Drains

- 1” tailpiece - exits through the bottom.
- For factory mounted units on self-contained coolers the plumbing is ran through the cooler and stubs out beneath the compressor compartment. Field connections must be made at that point.
- For factory mounted units on remote coolers or dry storage cabinets, the factory supplies a 1” drain line and two elbows for running the drain line out of the cabinet. If the desired location for the drain line exit is specified, it will be hooked-up at the factory. Field connections must be made at that point.

Materials

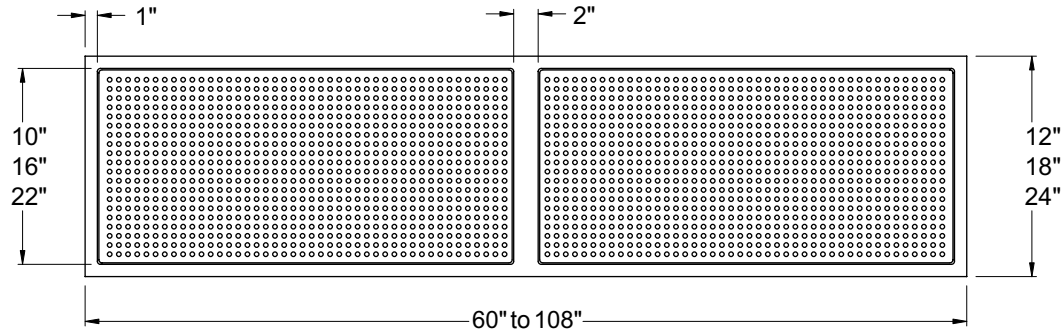
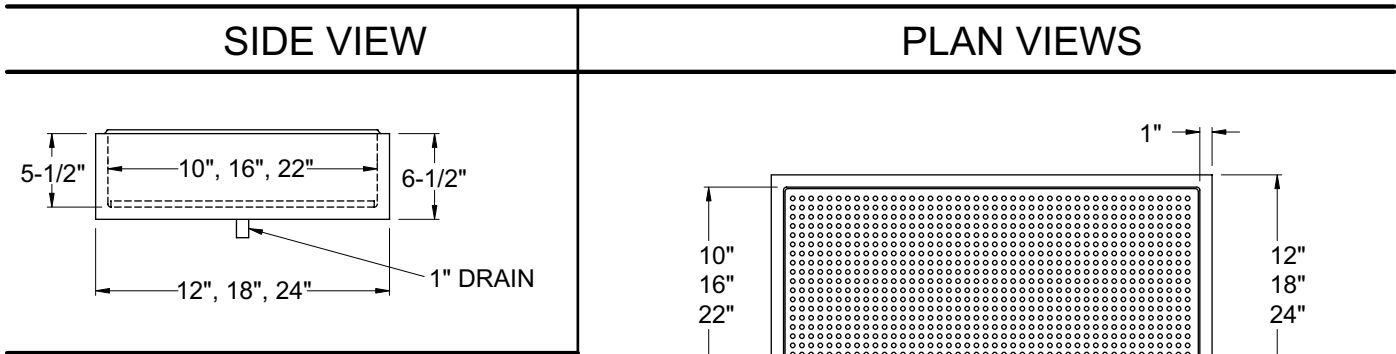
- All stainless steel construction

Glastender, Inc. • 5400 North Michigan Road • Saginaw, MI • 48604-9780 989.752.4275 • 800.748.0423 • Fax 989.752.4444 www.glastender.com	Approval/Notes:
Specifications subject to change without notice. For current specifications please visit our website.	

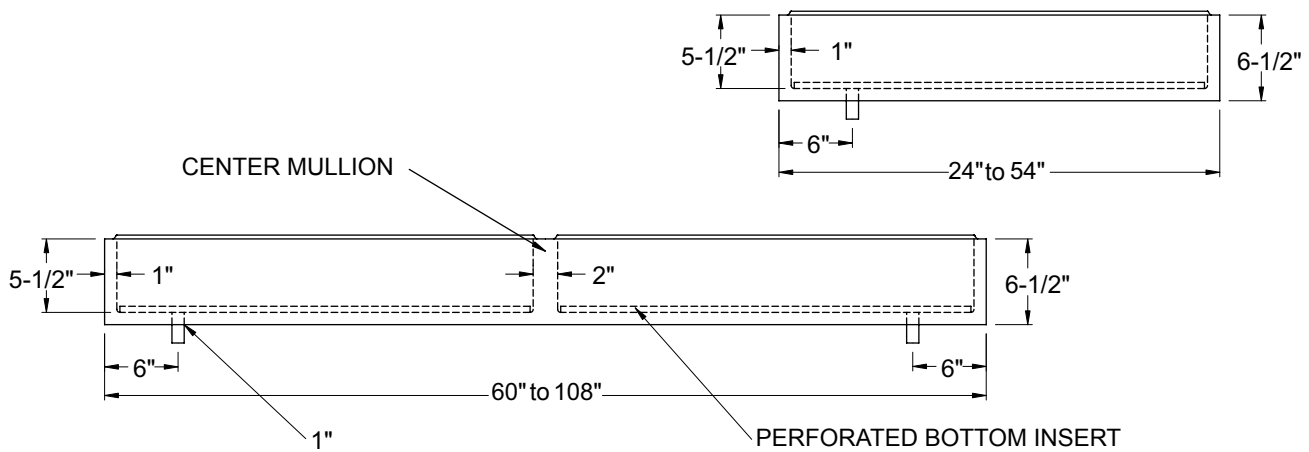
Ice Display Units

Dimensional Information

Ice Display Units are available in 12", 18" and 24" front-to-back depths and in 6" incremental lengths from 24" to 108". The liner is 5-1/2" deep and there is 1" of foamed-in-place insulation between the liner and the exterior bottom and sides. Units larger than 54" have two separate liners and a 2" wide center mullion.



FRONT VIEWS



5400 North Michigan Road • Saginaw, MI • 48604-9780
 989.752.4275 • 800.748.0423 • Fax 989.752.4444
 www.glastender.com

Printed in USA