

Project: _____	AIA# _____
Item #: _____ Qty: _____	SIS# _____
Model #: _____	

Back Bar Liquor Displays

BLD-18, BLD-24, BLD-30, BLD-36, BLD-42, BLD-48, BLD-18-S, BLD-24-S, BLD-30-S, BLD-36-S, BLD-42-S, BLD-48-S



BLD-24
shown with TOP-24-S



Standard Features

- Specially designed for the back bar
- Stainless steel interior with black vinyl-clad exterior sides
- For stainless steel exterior sides add '-S' suffix to model number
- Available with stainless steel or laminated finished top
- Built-in LED light for illuminating bottles
- Radius step edges for easy cleaning
- ABS step covers to reduce bottle noise
- Available in 18", 24", 30", 36", 42", and 48" lengths

To view underbar installation instructions, please visit: http://www.glastender.com/PDF/F-750-165_Underbar_Installation_Instructions.pdf
 To view cleaning and care instructions, please visit: http://www.glastender.com/PDF/F-423-011_ss_clean_care.pdf

Specifications

Electrical

- 120V, 1 phase, 60Hz, less than 5 full load amps
- Includes on/off switch and 6-foot NEMA 5-15P grounded cord



Materials

- 22 gauge black vinyl-clad parts include: exterior sides
- 20 gauge stainless steel parts include: interior side walls, back, light housing, bottom channel cover, steps, and step fillers (exterior sides '-S' models).
- 18 gauge stainless steel parts include: top channel
- 16 gauge galvanized parts include: leg channels
- 16 gauge zinc plated CR steel parts include: leg sockets
- ABS plastic parts include: step covers and step ends

Accessories

Legs

- A set of four 6" stainless steel legs with adjustable bullet feet is available, specify accessory model number CLS-4

Kick Rails

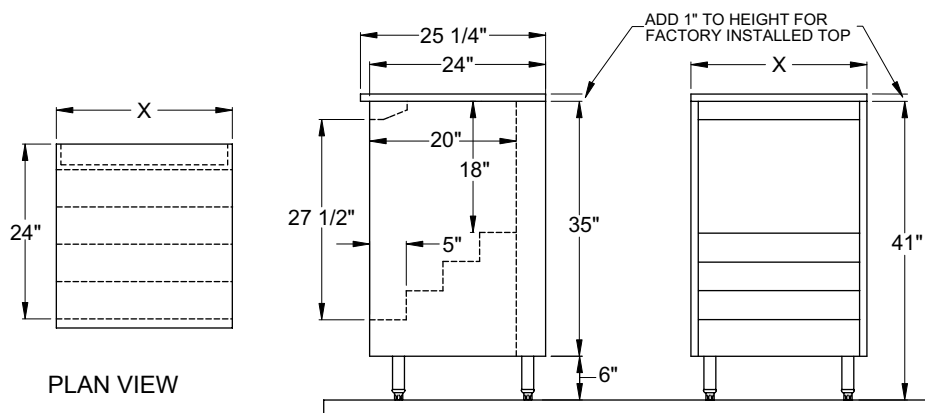
- A stainless steel rick rail to clip to the 6" legs is available, specify accessory model number CKR-*

Finished Tops

- Stainless steel top available, specify accessory model number TOP-*-S
- Laminated top available, specify accessory model number TOP-*-L

* Specify length in inches

Dimensional Information



PLAN VIEW

shown with optional 6" legs

SIDE ELEVATION

FRONT ELEVATION

Model #	X
BLD-18	18"
BLD-24	24"
BLD-30	30"
BLD-36	36"
BLD-42	42"
BLD-48	48"
BLD-18-S	18"
BLD-24-S	24"
BLD-30-S	30"
BLD-36-S	36"
BLD-42-S	42"
BLD-48-S	48"

<p>Glastender, Inc. • 5400 N Michigan Rd • Saginaw, MI • 48604-9780 989.752.4275 • 800.748.0423 • Fax 989.752.4444 www.glastender.com</p>	<p>Approval/Notes:</p>
Specifications subject to change without notice. For current specifications please visit our website.	