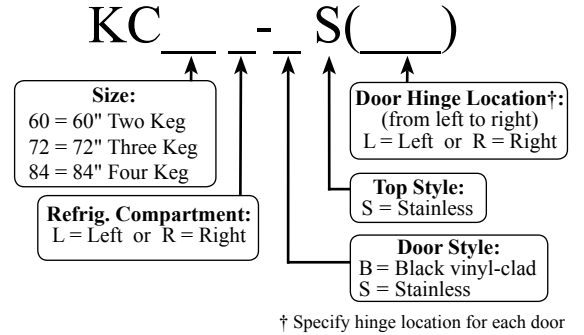




KC60L-BS(LR)

Project: _____	AIA# _____
Item #: _____ Qty: _____	SIS# _____
Model #: _____	

## Keg Coolers Two, Three and Four Keg Self-Contained



4004503  
Conforms to NSF/ANSI STD 7 and UL STD 471  
Certified to CSA STD C22.2 No. 120  
Meets NSF 7 requirements for closed container products



### Standard Features

- Galvanized steel interior with stainless steel floor
- Stainless steel keg racks and 1/2" thick high impact polypropylene threshold scuff plate
- Stainless steel finished top
- Stainless steel draft beer tower and drain pan - 2-faucet column (KC60), 3-faucet column (KC72), 4-faucet tee (KC84)
- Locking doors
- Evaporator above compressor compartment to maximize storage capacity
- Recessed compressor compartment back and 90° electrical plug enables flush wall placement
- Easy to remove condenser filter can be regularly cleaned to maintain condenser coil efficiency
- 180° swinging doors
- Leg sockets recessed into base

### Specifications

**Electrical**

- 120V, 1 phase, 60 Hz
- Full load amps - 5.7
- Dedicated 15 amp circuit is required
- Includes a 6 foot NEMA 5-15P grounded cord and plug which exits the back of refrigeration compartment



**Refrigeration**

- R134a
- Compressor - 1/4 HP
- Heat rejection - 2334 BTU/Hr
- **Operating Range**
- 34°F (1°C) to 40°F (4°C)

**Plumbing**

- Automatic condensate evaporator. No drain connection required
- 1/2" tailpiece provided on drain pan and pre-plumbed drain line which exits out bottom front of refrigeration compartment

**Materials**

- Stainless steel parts include: interior floor, evaporator cover, front of cabinet, hinges, hinge and lock brackets, and optional legs
- Black vinyl-clad steel parts include: standard sides, doors, and compressor cover
- Galvanized steel parts include: interior walls and ceiling, exterior sub-top, back and bottom
- Zinc plated CR steel parts include: leg sockets

**Capacities**

	KC60	KC72	KC84
• 1/2 barrels	2	3	4
• 1/4 barrels	2	3	4
• 1/6 barrels*	8	11	14

\*Consult factory for different tower options.

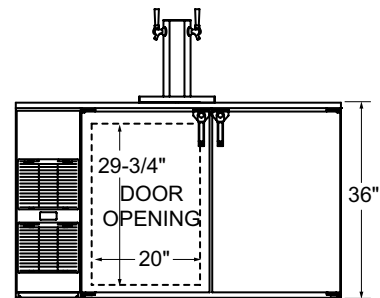
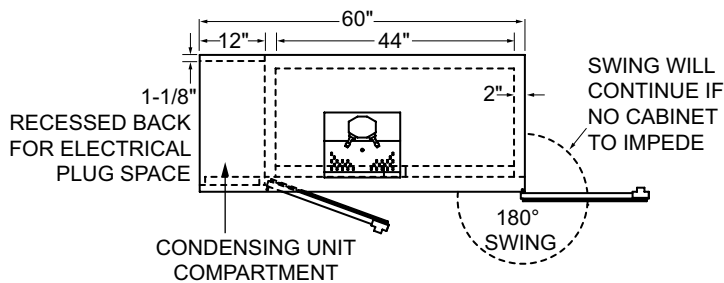
<p><b>Glastender, Inc.</b> • 5400 N Michigan Rd • Saginaw, MI • 48604-9780 989.752.4275 • 800.748.0423 • Fax 989.752.4444 www.glastender.com</p>	<p>Approval/Notes:</p>
--	------------------------

Specifications subject to change without notice. For current specifications please visit our website.

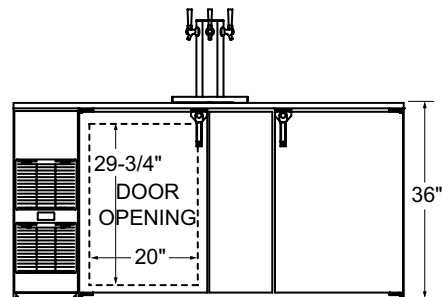
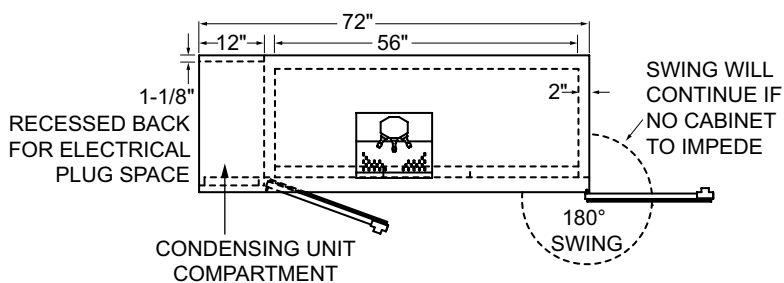
# Self-Contained Keg Coolers

## Dimensional Information

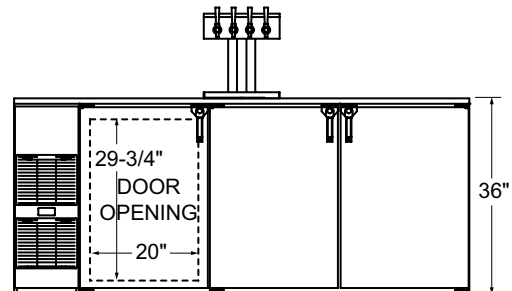
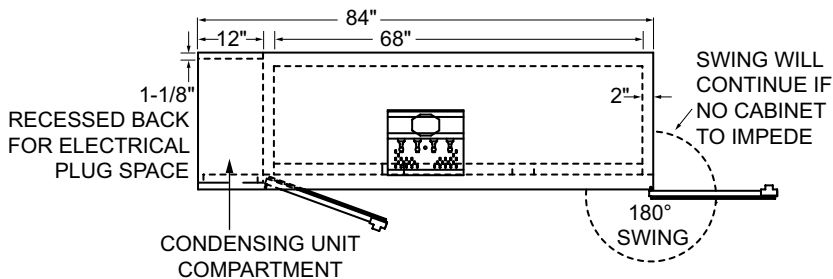
### KC60



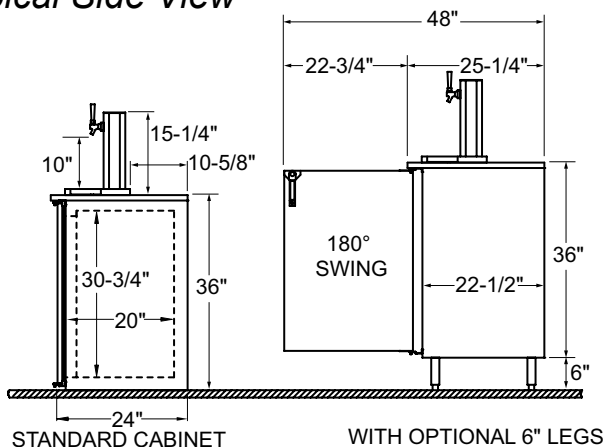
### KC72



### KC84



### Typical Side View



Note: Available with compressor left or right. Compressor left model shown. Use Model Number Key to specify location when ordering.