



IBA-24



Project: _____	AIA# _____
Item #: _____ Qty: _____	SIS# _____
Model #: _____	

# Ice Bins

See reverse side for model number key

## Standard Features

- All stainless steel construction
- One-piece, seamless top and backsplash
- ABS plastic breaker strip around ice bin liner: creates 5/16" raised edge around liner, acts as thermal barrier to prevent heat transfer, and makes the cover slide easier.
- Two tubing chase holes built-in to backsplash
- Available in 6" incremental lengths from 6" to 48"
- 24" deep version provides larger ice bin not just a deck extension on the back of the 19" deep model
- Sliding stainless steel cover
- CFC free foamed-in-place insulation
- Adjustable stainless steel bullet feet
- Ten circuit available with all 24" and wider models (add suffix '-CP10' to model number )
- Extra deep version is optional (add suffix '-ED' to model number)

## Specifications

### Drain

- Non-cold plate model: 1-1/2" tailpiece
- Ten circuit cold plate model '-CP10': 3/4" MPT

### Tubing Access Holes

- 7/8" by 2-7/8" (capacity per hole is 12 lines of 1/4" I.D. x 3/8" O.D. nylon braided tubing)

### Cover

- Two-piece sliding cover, 20 gauge stainless steel, included with all models

### Cold Plate

- Ten circuit available with all 24" and wider models
- Connection is 5/16" O.D. stainless steel tubing with swaged end

### Liner Depth

- 10-1/2" standard
- 14-1/2" for extra deep models

### Ice Capacity

- "A" depth standard = 2.79 lbs X length
- "A" depth extra deep = 3.85 lbs X length
- "B" depth standard = 3.54 lbs X length
- "B" depth extra deep = 4.89 lbs X length

### Legs

- 1-5/8" diameter 16 gauge stainless steel
- Stainless steel bullet feet

### Materials

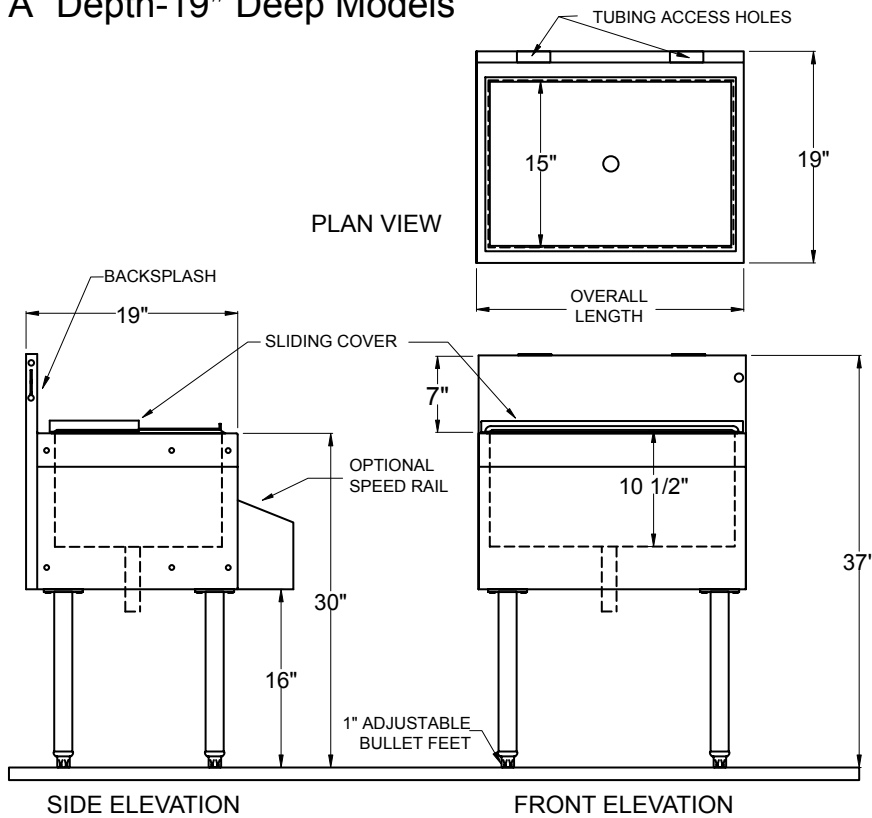
- 20 gauge stainless steel
- ABS plastic breaker strip around opening of ice bin liner

<b>Glastender, Inc.</b> • 5400 North Michigan Road • Saginaw, MI • 48604-9780 989.752.4275 • 800.748.0423 • Fax 989.752.4444 <a href="http://www.glastender.com">www.glastender.com</a>	Approval/Notes:
Specifications subject to change without notice. For current specifications please visit our website.	

# Ice Bins

## Dimensional Information

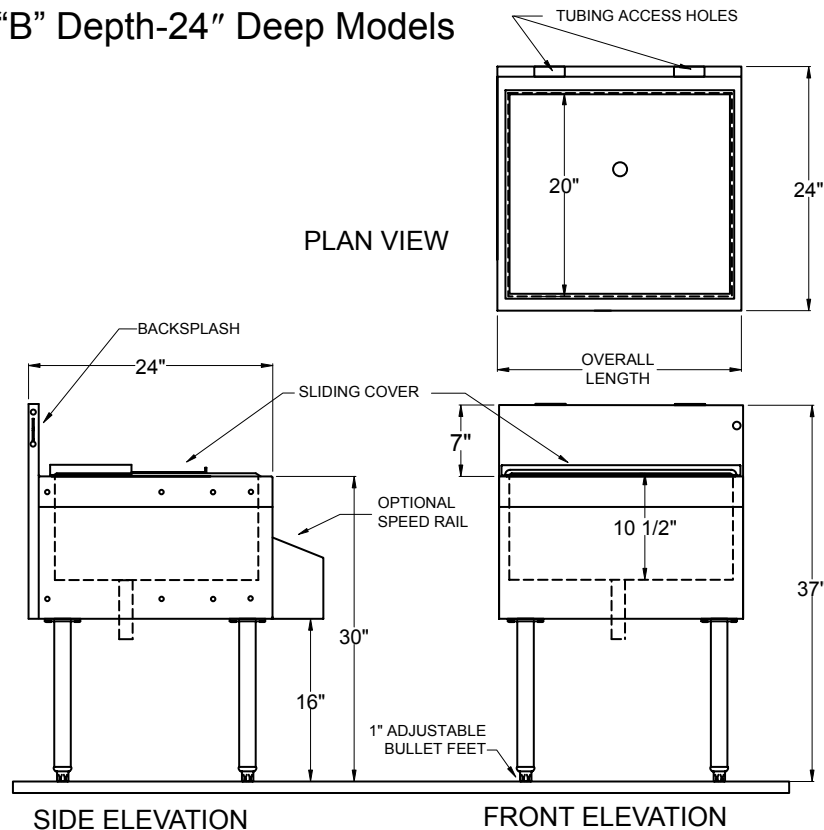
### "A" Depth-19" Deep Models



Model Number	Overall Length
IBA-6*	6"
IBA-12	12"
IBA-18	18"
IBA-24	24"
IBA-30	30"
IBA-36	36"
IBA-42	42"
IBA-48	48"

\* Note: 6" unit cannot be free standing

### "B" Depth-24" Deep Models



Model Number	Overall Length
IBB-6*	6"
IBB-12	12"
IBB-18	18"
IBB-24	24"
IBB-30	30"
IBB-36	36"
IBB-42	42"
IBB-48	48"

\* Note: 6" unit cannot be free standing



5400 North Michigan Road • Saginaw, MI • 48604-9780  
 989.752.4275 • 800.748.0423 • Fax 989.752.4444  
 www.glastender.com