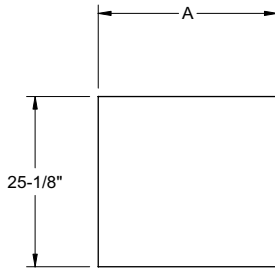


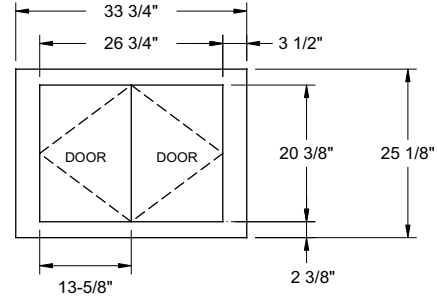
Project: _____	AIA# _____
Item #: _____ Qty: _____	SIS# _____
Model #: _____	

Cocktail Station Front Panels

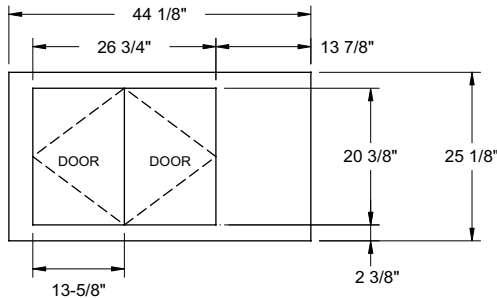
Front panels are constructed of 5/8" solid core plywood laminated on all six sides (faces and edges) for a finished thickness of 3/4". All dimensions shown are finished sizes.



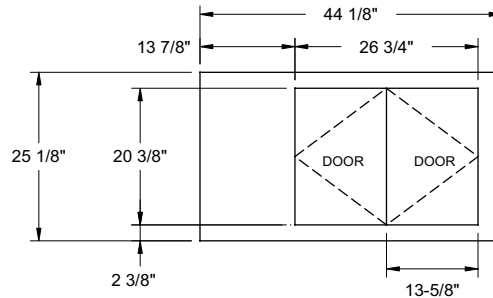
"A" DIMENSION	
MODEL	LENGTH
FP-26	26-1/32"
FP-29	29-1/32"
FP-32	32-1/32"
FP-34	34-1/4"
FP-35	35-1/32"
FP-40	40-1/8"
FP-41	41-1/32"
FP-46	46-1/8"



FRONT PANELS



DP-44R



DP-44L

COCKTAIL
STATION
MODEL

FRONT PANEL MODEL

	FP-26	FP-29	FP-32	FP-34	FP-35	FP-40	FP-41	FP-46	DP-34	DP-44L	DP-44R
CS-42x26	-	-	-	-	-	1	-	-	-	-	-
CS-42x32	-	-	-	-	-	1	-	-	-	-	-
CS-54x32	2	-	-	-	-	-	-	-	-	-	-
CS-60x32	-	2	-	-	-	-	-	-	-	-	-
CS-42x26G	-	-	-	-	-	1	-	-	-	-	-
CS-42x32G	-	-	-	-	-	1	-	-	-	-	-
CS-48x32G	-	-	-	-	-	-	-	1	-	-	-
CS-48+3L	-	-	-	-	-	-	-	-	-	1	-
CS-48+3R	-	-	-	-	-	-	-	-	-	-	1
CS-66x26	-	-	2	-	-	-	-	-	-	-	-
CS-66x32	-	-	2	-	-	-	-	-	-	-	-
CS-72	-	-	-	-	2	-	-	-	-	-	-
CS-72+3L	-	-	-	1	-	-	-	-	1	-	-
CS-72+3R	-	-	-	1	-	-	-	-	1	-	-
CS-84	-	-	-	-	-	-	2	-	-	-	-
CS-84+3L	-	-	-	-	-	-	-	1	1	-	-
CS-84+3R	-	-	-	-	-	-	-	1	1	-	-

Glastender, Inc. • 5400 North Michigan Road • Saginaw, MI • 48604-9780 989.752.4275 • 800.748.0423 • Fax 989.752.4444 www.glastender.com	Approval/Notes: _____
Specifications subject to change without notice. For current specifications please visit our website.	